

SUMMER SAFETY



FLOOD WARNING

A Flood Warning is issued when flooding is **happening** or will happen soon. Some roads will be **flooded**.

Move to higher ground.

Never drive through flooded roads.

take action.

FLOOD WATCH

A Flood Watch is issued when flooding is possible.

Stay tuned to radio/TV, follow **weather.gov** and be ready to seek higher ground.

Learn more at **weather.gov/flood**.

be prepared.



Do You Really Know How Deep the Water is?

12 inches of fast-moving water can carry away a small car.



6 inches of fast-moving water can knock over and carry away an adult.

18-24 inches of fast-moving water can carry away most large SUVs, vans and trucks.

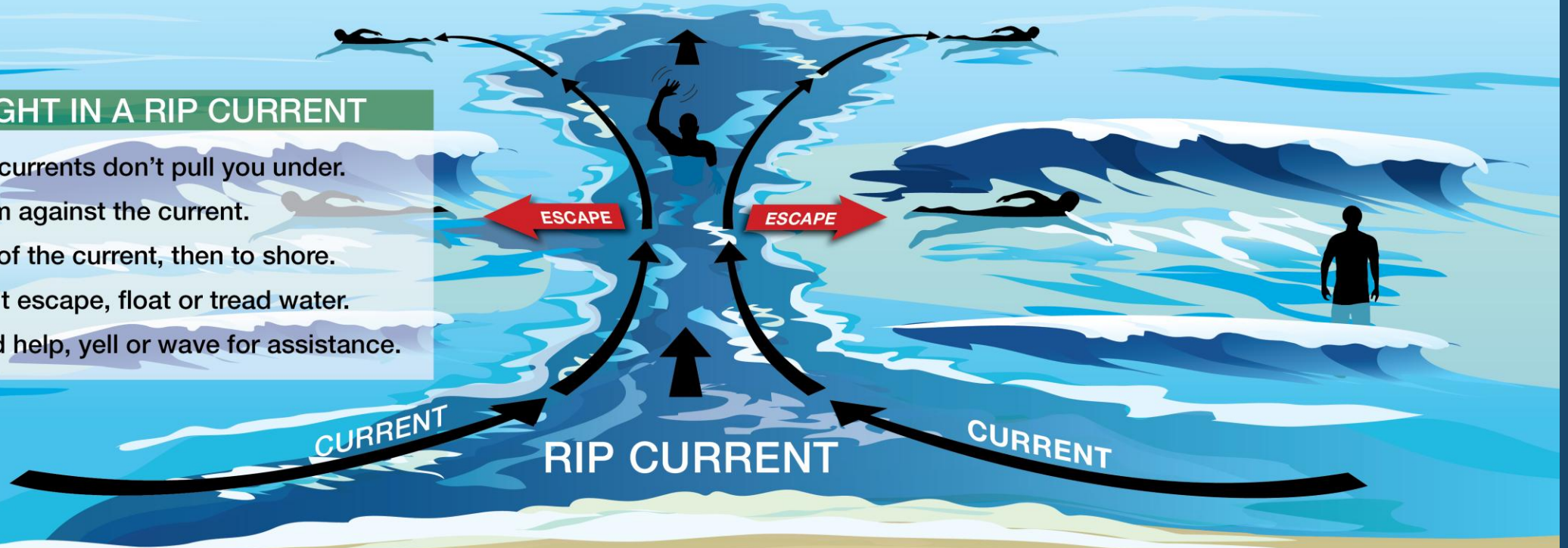


RIP CURRENTS

KNOW YOUR OPTIONS

IF CAUGHT IN A RIP CURRENT

- Relax, rip currents don't pull you under.
- Don't swim against the current.
- Swim out of the current, then to shore.
- If you can't escape, float or tread water.
- If you need help, yell or wave for assistance.



Rip currents are powerful currents of water moving away from shore. They can sweep even the strongest swimmer away from shore. If at all possible, swim near a lifeguard.



Heat Exhaustion

ACT FAST

- Move to a cooler area
- Loosen clothing
- Sip cool water
- Seek medical help if symptoms don't improve

Dizziness

Thirst

*Heavy
Sweating*

Nausea

Weakness



Heat Stroke

ACT FAST

CALL 911

- Move person to a cooler area
- Loosen clothing and remove extra layers
- Cool with water or ice

Confusion

Dizziness

*Becomes
Unconscious*

Heat exhaustion can lead to heat stroke.

Heat stroke can cause death or permanent disability if emergency treatment is not given.



Stay Cool, Stay Hydrated, Stay Informed!



GROUND BASED SPARKLING DEVICES & NOVELTIES ARE NOW LEGAL IN NEW JERSEY

SPARKLERS



Sparkling Devices: MORNING GLORIES

CAUTION: FLAMMABLE
USE ONLY UNDER CLOSE ADULT SUPERVISION. FOR OUTDOOR USE ONLY. DO NOT TOUCH HOT WOOD. HOLD IN HAND WITH ARM EXTENDED AWAY FROM BODY. KEEP BURNING END OR SPARKS AWAY FROM WEARING APPAREL OR OTHER FLAMMABLE MATERIAL. HOLD AND LIGHT ONE DEVICE AT A TIME. AFTER USE PLACE WOOD IN WATER.

Sparkling Devices: WIRE WITCH SPARKLERS

CAUTION: FLAMMABLE
USE ONLY UNDER CLOSE ADULT SUPERVISION. FOR OUTDOOR USE ONLY. DO NOT TOUCH HOT WIRE. HOLD IN HAND WITH ARM EXTENDED AWAY FROM BODY. KEEP BURNING END OR SPARKS AWAY FROM WEARING APPAREL OR OTHER FLAMMABLE MATERIAL. HOLD AND LIGHT ONE DEVICE AT A TIME. AFTER USE PLACE WIRE IN WATER.

DE-REGULATED NOVELTIES

SMOKE DEVICES

-Emits Cloud of Smoke-



Smoke Balls

Smoke Cone

Cylindrical

Smoke Candle

Snake Balls, Toy Snake Devices

CAUTION: FLAMMABLE
USE ONLY UNDER CLOSE ADULT SUPERVISION. FOR OUTDOOR USE ONLY. DO NOT HOLD IN HAND. PLACE ON HARD, FLAT, LIGHT FUSE AND GET AWAY.

NOVELTIES



SNAKES

CAUTION: FLAMMABLE
USE ONLY UNDER CLOSE ADULT SUPERVISION. FOR OUTDOOR USE ONLY. DO NOT PUT IN MOUTH. TAP ON GROUND OR AGAINST HARD SURFACE. NOT REUSABLE. FOR 1/2 INCH & UNDER 8 INCHES OF AGE.

PARTY POPPER
EMITS SHOWERS OF CONFETTI

PARTY POPPER - BOTTLE TYPE

CAUTION: FLAMMABLE
USE ONLY UNDER CLOSE ADULT SUPERVISION. DO NOT POINT EITHER END TOWARD FACE OR OTHER PERSON. HOLD IN HAND - USE STRING.

PARTY POPPER - PINCH TYPE

CAUTION: FLAMMABLE
USE ONLY UNDER CLOSE ADULT SUPERVISION. DO NOT POINT EITHER END TOWARD FACE OR OTHER PERSON. HOLD IN HAND - PULL TRIGGER SAFELY.

PERMITTED "NON-AERIAL" SPARKLING DEVICES

GROUND SPARKLING DEVICES



BALL & DISK

SPIN ON GROUND. EMITS FLAME AND SPARKS.

CYLINDRICAL

Ground Based Sparklers / Coney Ground Spins

SPIN ON GROUND. EMITS FLAME AND SPARKS.

CAUTION
SPIN ON GROUND. EMITS FLAME AND SPARKS. USE ONLY UNDER CLOSE ADULT SUPERVISION. FOR OUTDOOR USE ONLY. PLACE ON HARD, FLAT SURFACE. DO NOT HOLD IN HAND. LIGHT FUSE AND GET AWAY.

SPARKLING Wheel DEVICES



CAUTION
SPIN ON POST. EMITS FLAME AND SPARKS. USE ONLY UNDER CLOSE ADULT SUPERVISION. FOR OUTDOOR USE ONLY. NAIL TO POST OR STAKE SO THAT WHEEL WILL TURN FREELY. DO NOT HOLD IN HAND. LIGHT FUSE AND GET AWAY.

GROUND BASED SPARKLERS

UP TO 500 GRAMS



Cylindrical

Square

Cone

California Rocket Shaped Fountain

CAUTION
Emits Showers of Sparks. USE ONLY UNDER CLOSE ADULT SUPERVISION. FOR OUTDOOR USE ONLY. STICK FIRMLY ON GROUND IN AN UPRIGHT POSITION. REMOVE CAP FOR LIGHTING. DO NOT HOLD IN HAND. LIGHT FUSE AND GET AWAY.

MAY NOT HAVE MORE THAN 500g OF PYROTECHNIC MIXTURE.

PROHIBITED "AERIAL" CONSUMER FIREWORKS - NEW JERSEY

except as part of a Permitted Public Fireworks Display.

SKY ROCKETS / BOTTLE ROCKETS

WARNING: FLAMMABLE ROCKET



FIRECRACKERS

WARNING: EXPLOSIVE



RELOADABLE SHELL DEVICE / ROMAN CANDLES

WARNING: SHOOTING FLAMING BALLS



AERIALS

WARNING: SHOOTING FLAMING BALLS & REPORTS



SINGLE TUBE DEVICE WITH REPORT

WARNING: SHOOTING FLAMING BALLS & REPORTS





United States
Consumer Product Safety Commission

Fireworks Injuries & Deaths

2023 REPORT

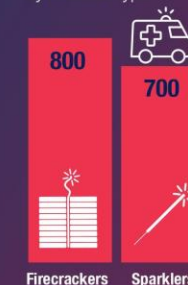
#CelebrateSafely

Safety Tips

- ★ Never allow children to play with or ignite fireworks, including sparklers.
- ★ Make sure fireworks are legal in your area before buying or using them.
- ★ Keep a bucket of water or a garden hose handy in case of fire or other mishap.
- ★ Light fireworks one at a time, then move back quickly.
- ★ Never try to re-light or pick up fireworks that have not ignited fully.
- ★ Never use fireworks while impaired by alcohol or drugs.
- ★ More Fireworks Safety Tips:
[cpsc.gov/fireworks](https://www.cpsc.gov/fireworks)

How & When Injuries Occurred

2023 Injuries
by Firework Type



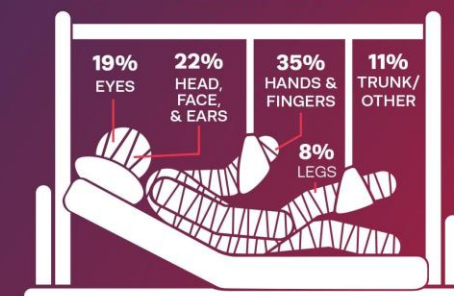
66%
of injuries occurred
in the weeks before &
after the July 4th holiday



Most Injured Body Parts



42% of the injuries were
burns



Injuries & Deaths



9,700

people were
treated in ERs
for fireworks injuries in 2023

8 Deaths
from Fireworks in 2023



Source: U.S. Consumer Product Safety
Commission 2023 Fireworks Annual Report



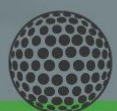
WHEN THUNDER ROARS GO INDOORS



Lightning Fatalities For Outdoor Sports



40%
SOCCER



27%
GOLF



17%
RUNNING



10%
BASEBALL



3%
FOOTBALL



3%
OTHER



weather.gov/lightning

step 1

Leave the field
immediately



step 2

Seek shelter in an
enclosed building or car



Wait 30 minutes after the last rumble of thunder to return outside

BE SAFE AND HAVE A GREAT SUMMER!

