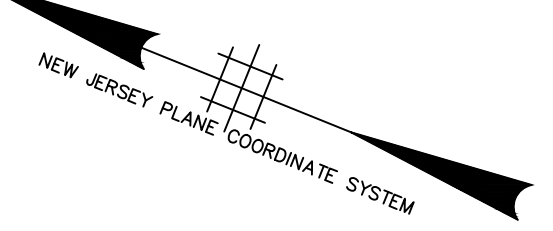


SIGN DESIGNATION	MESSAGE	SIZE X	AREA	REQUIRED QUANTITY	TOTAL AREA (S.F.)
R1-2	YIELD	36" X 36"	9.0	1	9.0
R2-1(30)	SPEED LIMIT 30 (SCHOOL USE)	24" X 30"	5.0	1	5.0
R2-1(40)	SPEED LIMIT 40	24" X 30"	5.0	3	15.0
R2-1(45)	SPEED LIMIT 45	24" X 30"	5.0	1	5.0
R3-2	NO LEFT TURN SYMBOL	24" X 24"	4.0	1	4.0
R3-7R	RIGHT LANE MUST TURN RIGHT	30" X 30"	6.2	2	12.5
R3-8b	LEFT ONLY/THROUGH ONLY/RIGHT ONLY	48" X 30"	10.0	2	20.0
R3-9a	TWO-WAY LEFT TURN ONLY	30" X 36"	7.5	2	15.0
R3-9b	TWO-WAY LEFT TURN ONLY	24" X 36"	6.0	8	48.0
R3-9cP	BEGIN	30" X 12"	2.5	1	2.5
R3-9dP	END	30" X 12"	2.5	1	2.5
R5-1	DO NOT ENTER	30" X 30"	6.2	1	6.2
R9-3	NO PEDESTRIAN CROSSING (SYMBOL)	18" X 18"	2.2	4	9.0
R9-3bP(L)	USE CROSSWALK (LEFT)	18" X 12"	1.5	1	1.5
R9-3bP(R)	USE CROSSWALK (RIGHT)	18" X 12"	1.5	1	1.5
R(NJ)3-8B	LEFT ONLY/ RIGHT ONLY	30" X 30"	6.2	2	12.5
R(NJ)3-8I	LEFT ONLY/ THRU ONLY	30" X 30"	6.2	2	12.5
R(NJ)3-8T	LEFT ONLY/ THRU ONLY/THRU AND RIGHT	48" X 30"	10.0	7	70.0
R(NJ)7-4X	NO STOPPING OR STANDING	12" X 18"	1.5	5	7.5
R(NJ)12-11A(MOD)	TRUCKS OVER 4 TONS EXCLUDED ON ALEXANDER	30" X 42"	8.7	1	8.7
W4-2R	LANE ENDS	36" X 36"	9.0	1	9.0
W16-7PL	DOWNWARD DIAGONAL ARROW (plaque)	24" X 12"	2.0	4	8.0
W16-9P	AHEAD	24" X 12"	2.0	4	8.0
M1-6(526)	COUNTY ROUTE MARKER (526)	24" X 24"	4.0	3	12.0
M1-6(571)	COUNTY ROUTE MARKER (571)	24" X 24"	4.0	3	12.0
M1-6(638)	COUNTY ROUTE MARKER (638)	24" X 24"	4.0	2	8.0
M1-6(607)	COUNTY ROUTE MARKER (607)	24" X 24"	4.0	1	4.0
M6-1L	DIRECTIONAL ARROW (LEFT)	21" X 15"	2.2	1	2.2
M6-3	DIRECTIONAL ARROW (UP)	21" X 15"	2.2	2	4.4
M6-4	DIRECTIONAL ARROW (DOUBLE)	21" X 15"	2.2	2	4.4
S1-1	SCHOOL	36" X 36"	9.0	8	72.0
S4-2P	WHEN CHILDREN ARE PRESENT	24" X 10"	1.7	1	1.7
S4-3P	SCHOOL (plaque)	24" X 8"	1.3	1	1.3
SIGN TOTAL					415.0

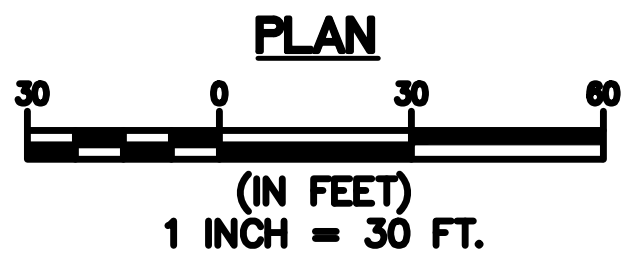
MATCH LINE STA. 37+00

MATCH LINE STA. 46+00



- LEGEND**
- (A) 4" SOLID WHITE LINE
  - (B) 4" DASHED WHITE LINE
  - (C) 4" DASHED YELLOW LINE
  - (D) 4" SOLID YELLOW LINE
  - (E) 2 - 4" SOLID YELLOW LINES
  - (F) 8" SOLID WHITE LINE
  - (G) 6" SOLID WHITE LINE
  - (H) 24" SOLID WHITE LINES SPACED 12' c to c @ 45°
  - (I) 24" SOLID YELLOW LINES SPACED 12' c to c @ 45°
  - (J) 4" DASHED WHITE LINES 2' LINE WITH 4' SPACE
  - (K) 24" SOLID WHITE LINE
  - (L) 4" DASHED WHITE LINES 3' LINE WITH 9' SPACE

- TYPICAL DASHED LINE DETAIL**  
NOT TO SCALE
- (A) TWO-WAY PLOWABLE MONO-DIRECTIONAL AMBER PAVEMENT REFLECTOR
  - (W) TWO-WAY PLOWABLE MONO-DIRECTIONAL WHITE PAVEMENT REFLECTOR
  - (M) TWO-WAY PLOWABLE BI-DIRECTIONAL AMBER PAVEMENT REFLECTOR



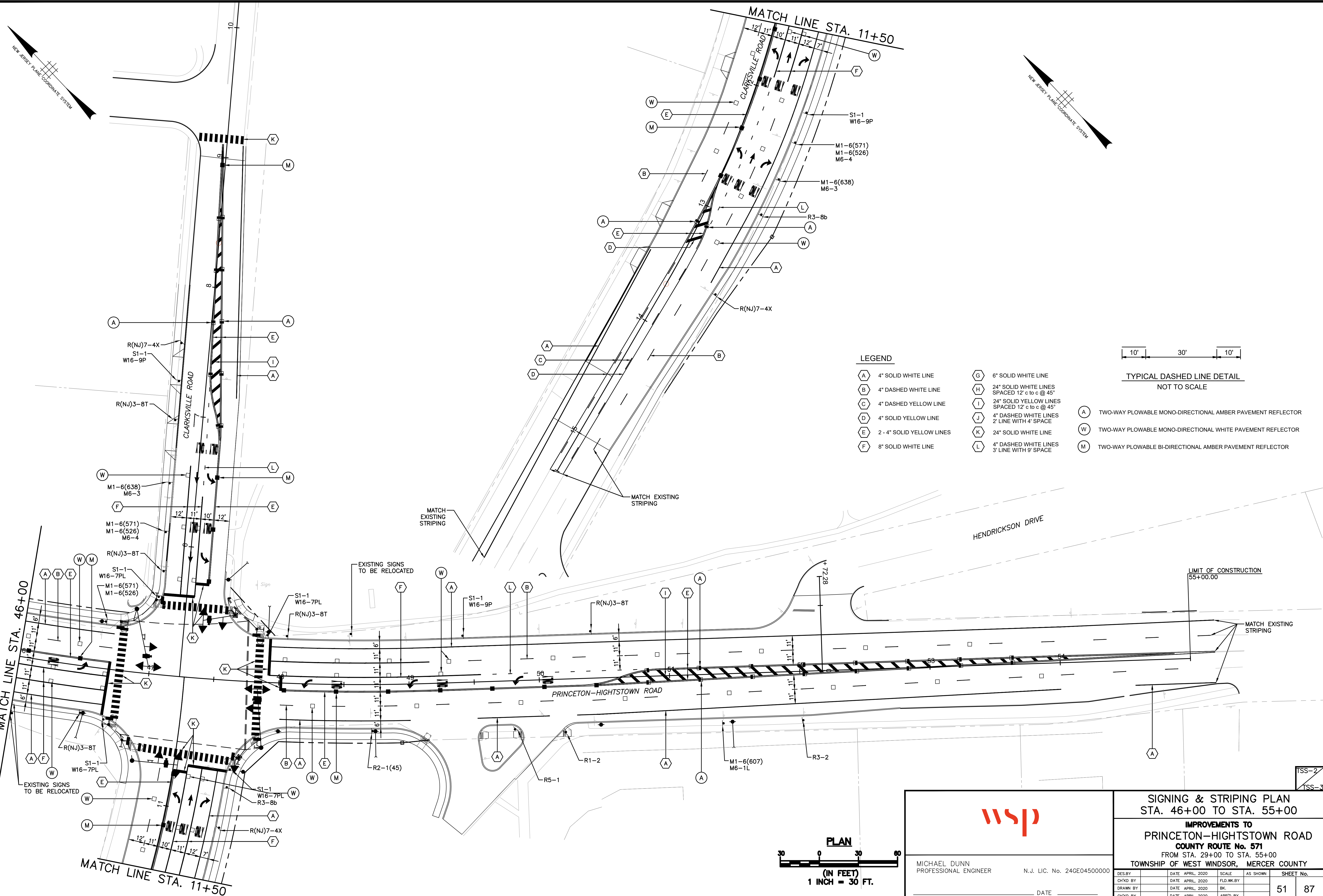
MICHAEL DUNN  
PROFESSIONAL ENGINEER  
N.J. LIC. No. 24GE04500000

**SIGNING & STRIPING PLAN**  
STA. 28+00 TO STA. 46+00

**IMPROVEMENTS TO**  
**PRINCETON-HIGHTSTOWN ROAD**  
**COUNTY ROUTE No. 571**  
FROM STA. 29+00 TO STA. 55+00  
TOWNSHIP OF WEST WINDSOR, MERCER COUNTY

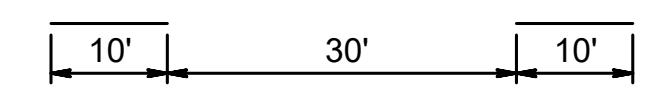
DES. BY	DATE	APRIL, 2020	SCALE	AS SHOWN	SHEET No.
CHK'D BY	DATE	APRIL, 2020	FLD. WK. BY		
DRAWN BY	DATE	APRIL, 2020	BK.		50
CHK'D BY	DATE	APRIL, 2020	APP'D BY		87

LOUIS BERGER, MORRISTOWN, NJ CADD FILE: V:\Operations\167-DR\PC\1001\Technical\Cadd\Sheet Files\Contract 2\15\_Signing & Striping Plans.dwg Aug 18, 2020 - 9:51am

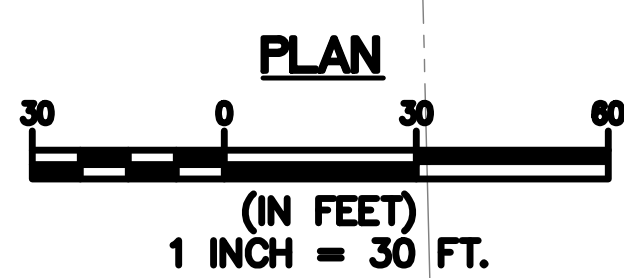


**LEGEND**

- (A) 4" SOLID WHITE LINE
- (B) 4" DASHED WHITE LINE
- (C) 4" DASHED YELLOW LINE
- (D) 4" SOLID YELLOW LINE
- (E) 2 - 4" SOLID YELLOW LINES
- (F) 8" SOLID WHITE LINE
- (G) 6" SOLID WHITE LINE
- (H) 24" SOLID WHITE LINES SPACED 12' c to c @ 45°
- (I) 24" SOLID YELLOW LINES SPACED 12' c to c @ 45°
- (J) 4" DASHED WHITE LINES 2" LINE WITH 4" SPACE
- (K) 24" SOLID WHITE LINE
- (L) 4" DASHED WHITE LINES 3" LINE WITH 9" SPACE
- (A) TWO-WAY FLOWABLE MONO-DIRECTIONAL AMBER PAVEMENT REFLECTOR
- (W) TWO-WAY FLOWABLE MONO-DIRECTIONAL WHITE PAVEMENT REFLECTOR
- (M) TWO-WAY FLOWABLE BI-DIRECTIONAL AMBER PAVEMENT REFLECTOR



TYPICAL DASHED LINE DETAIL  
NOT TO SCALE



MICHAEL DUNN  
PROFESSIONAL ENGINEER

N.J. LIC. No. 24GE04500000

DATE \_\_\_\_\_

<b>SIGNING &amp; STRIPING PLAN</b>			
STA. 46+00 TO STA. 55+00			
<b>IMPROVEMENTS TO</b>			
<b>PRINCETON-HIGHTSTOWN ROAD</b>			
<b>COUNTY ROUTE No. 571</b>			
FROM STA. 29+00 TO STA. 55+00			
TOWNSHIP OF WEST WINDSOR, MERCER COUNTY			
DES. BY	DATE	SCALE	SHEET No.
CHK'D BY	DATE	FLD. WK. BY	87
DRAWN BY	DATE	BK.	51
CHK'D BY	DATE	APP'D BY	87