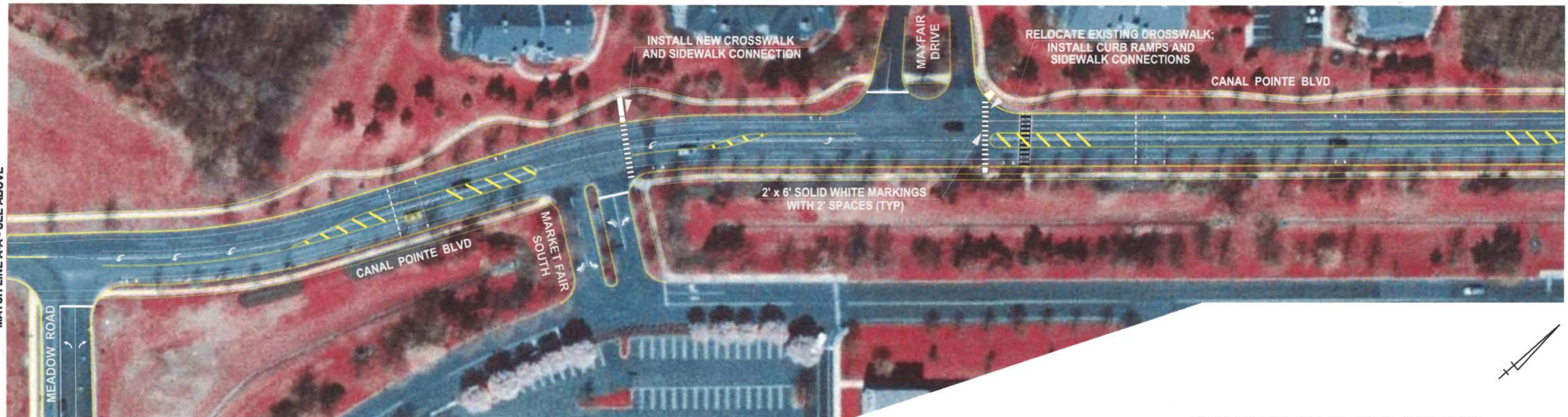


MATCH LINE A-A - SEE BELOW



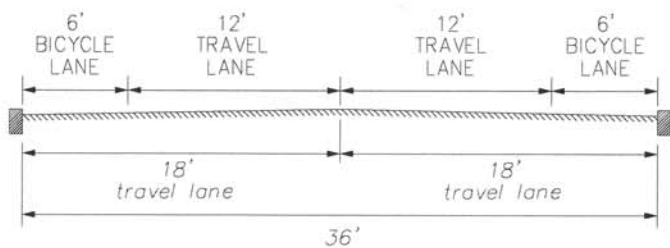
MATCH LINE A-A - SEE ABOVE

MATCH LINE B-B - SEE SHEET 2

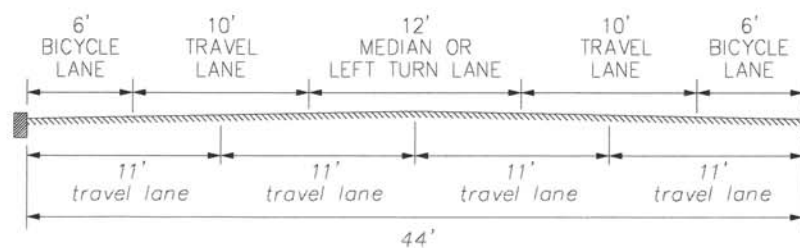
SEE SHEETS 2 AND 3 OF 3 FOR PAVEMENT MARKING LEGENDS

EXISTING AND PROPOSED CROSS-SECTION

CANAL POINTE BLVD/WHEELER WAY, SOUTH OF MEADOW ROAD



CANAL POINTE BLVD, NORTH OF MEADOW ROAD



BMS DRAWN	DJK CRD	CONCEPTUAL "ROAD DIET" RESTRIPIING	
		THE Burns GROUP ENGINEERING AND CONSTRUCTION 222 VALLEY CREEK BLVD, SUITE 140 EXTON, PA 19341 (610)407-9700	
		CANAL POINTE BOULEVARD STUDY	
		TOWNSHIP OF WEST WINDSOR	MERCER COUNTY
		NEW JERSEY	
NEW JERSEY PROFESSIONAL ENGINEER No.	40' SCALE	DWG: 08140_base.DWG	SHEET NUMBER 1 OF 3
		DATE: JUNE 9, 2014	